

JOULETEMP

COOL AND FREEZER ROOM CONTROL

► **Cooling, heating and humidity control with defrost** ◀



► JouleTemp represents a new concept in room controls – full cool room control, alarm and monitoring functions in a standalone control with ethernet communications via your computer's web browser. Includes 2 stages of cooling (with defrost), 2 stages of heating plus humidity control.

- Cooling, heating & humidity* control
- High-precision temperature sensor included with 0.1°C resolution
- Real-time clock with battery
- Time/date stamped data logging
- PID control option
- Ethernet port & free Modbus TCP
- Designed and manufactured in Australia to international standards
- Alarm buzzer on board
- Major upgrade for TACm installations
- Straight, tilt and panel-mount options
- Door monitor and alarm
- Cryogenic fridges sensor option
- No software to install – browser based
- Colour-coded temperature graphing
- Event log tracks alarms
- Password-protected programming
- Import/export set-up text file



Precision temperature sensor included



**humidity sensor optional*

• CONTROL • MONITOR • PROTECT

Designed and manufactured in Australia

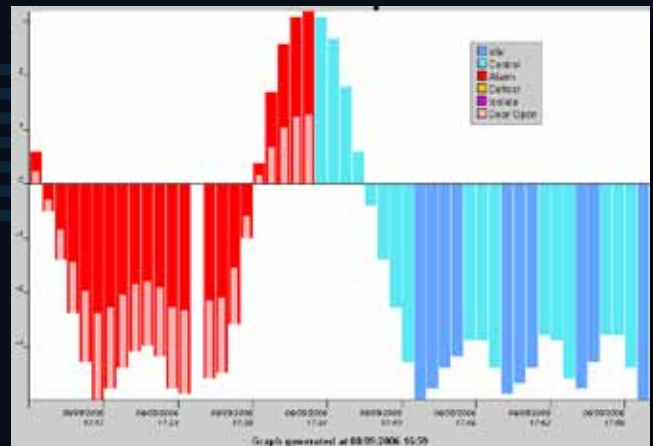
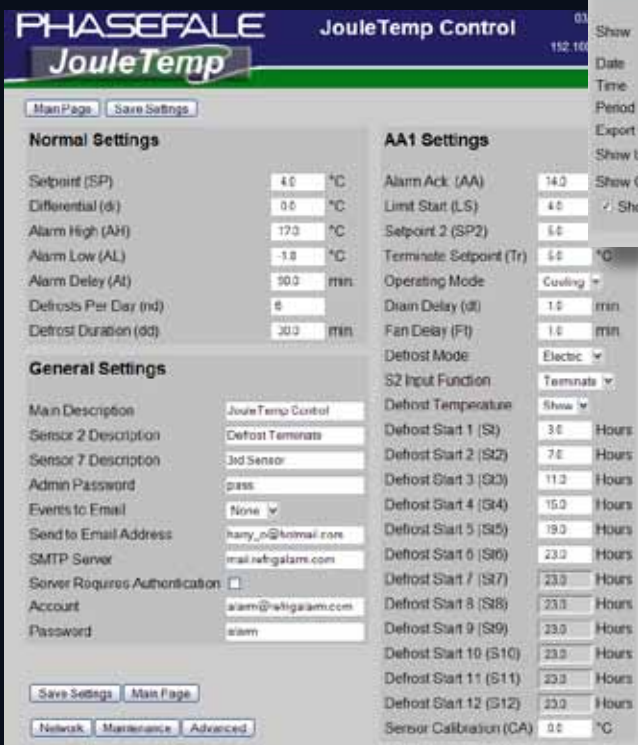
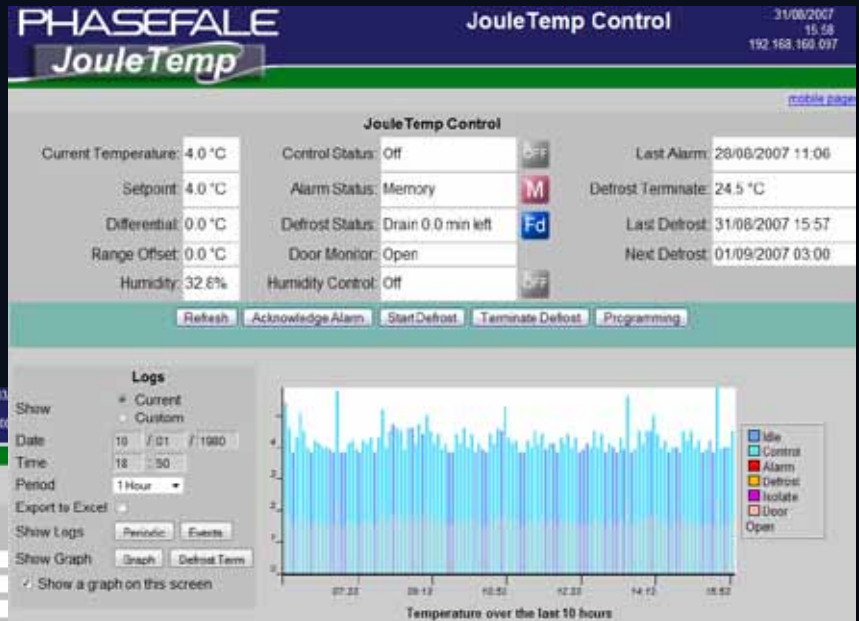


JOULETEMP

NOT JUST A CONTROL – THE SOFTWARE IS BUILT IN

► The main screen shows control, temperature, alarm and defrost status. The graph is colour-coded to quickly recognise control and alarms etc. Status icons are animated.

▼ One of three programming screens; each is password protected where settings are viewed and/or changed.



Specify a graph by time and date plus duration. The graph includes colour-coded status plus door open or close and a mouse-over display of the data point.

▼ Event logs provide alarm reporting and status. Periodic logs provide CSV data for export.

▼ JouleTemp can also transmit alarms and events via email/SMS* (*SMS via email requires paid service)

| Date | Time | Event | Temperature | Temp 2 | Humidity | Temp 3 | Alarm |
|------------|----------|---------------------------------|-------------|---------|----------|---------|-------|
| 24/08/2007 | 16:13:50 | Door Monitor (DOR) Changed | -0.2 °C | 27.1 °C | 34.4% | 42.3 °C | Off |
| 24/08/2007 | 16:13:31 | S7 Name Changed | -0.2 °C | 27.1 °C | 34.4% | 42.3 °C | Off |
| 24/08/2007 | 16:13:30 | S2 Name Changed | -0.2 °C | 27.1 °C | 34.4% | 42.3 °C | Off |
| 24/08/2007 | 14:15:15 | Humidity Calibrate Low Changed | 1.3 °C | 27.0 °C | 35.4% | 42.2 °C | Off |
| 20/08/2007 | 14:03:24 | Terminate Setpoint (Tr) Changed | 5.1 °C | 26.7 °C | 35.6% | 42.2 °C | Off |
| 20/08/2007 | 14:02:44 | Setpoint (SP) Changed | 4.8 °C | 26.6 °C | 35.6% | 42.1 °C | Off |
| 20/08/2007 | 14:02:24 | Defrost Initiated | 4.7 °C | 26.6 °C | 35.6% | 42.2 °C | Off |
| 20/08/2007 | 13:53:45 | Defrost Duration (dd) Changed | 4.4 °C | 26.9 °C | 35.6% | 42.1 °C | Off |



► Why Phasefale?

Phasefale has been a pioneer and leader in Australian temperature control and alarm systems since 1980. Our range is designed and manufactured in Australia. Call us now to discuss your alarm and control needs.

► Telephone
+61 3 9584 5590
► Fax
+61 3 9584 5356

► Address
Phasefale Controls Pty Ltd
83 Taunton Drive
Cheltenham VIC 3192

► Email
sales@phasefale.com.au
► Web
www.phasefale.com.au

